



**Pelayo Antuña, DDS**  
Clínica Antuña de Alaiz  
Oviedo Asturias  
Spain

**Immediate implant and temporization of an Astra Tech Implant System® OsseoSpeed® EV implant using an Acuris™ Conometric abutment. A paradigm shift in prosthetic retention for single tooth restorations.**

A 61-year-old patient visited the clinic with a fracture to her first premolar. We decided to perform an immediate implant placement followed by an immediate temporary restoration, using an Acuris Conometric abutment.

Acuris is a cement free retention system that provides fixed retention, but the prosthesis is still retrievable by the clinician.



**1.** Aspect of the alveolus after the atraumatic extraction.



**2.** A 3.6 x 11mm OsseoSpeed EV implant was inserted transalveolarly.



**3.** The implant was anchored to the palatal wall of the alveolus.



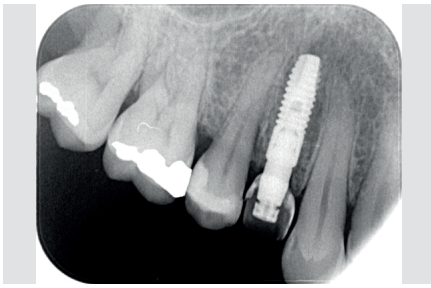
**4.** The buccal wall of the alveolus was grafted with a xenograft stabilized by the provisional restoration.



**5.** After the connection of an Acuris Conometric Abutment (3.6/2.0°/4.5/1), the Conometric Temporization Cap was snapped into place.



**6.** The implant was loaded with a provisional restoration that was relined intraorally to the Conometric Temporization Cap and polished and finished extraorally.



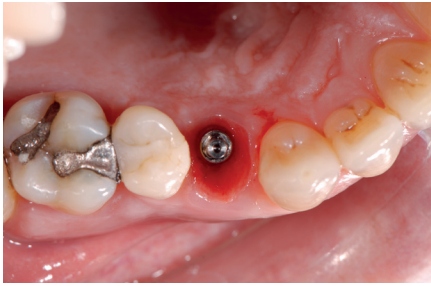
7. Control x-ray of the immediate implant and the provisional restoration.



8. We waited 2.5 months for osseointegration of the implant before the final impression.



9. This was the aspect of the tissue after the removal of the provisional restoration. There is no sign of inflammation.



10. Occlusal view of the Conometric abutment and the contoured soft tissue.



11. At this point the Conometric Impression Cap was inserted and aligned to the indexing part of the abutment and snapped into place.



12. Before inserting the final crown, we checked the contact points and the occlusion using the crown and the Conometric Lab Cap. The crown was fixed to the Lab Cap with a cyanoacrylate.



13. Lateral view of the final crown fixed to the Conometric Lab Cap.



14. Once verified that everything was correct the final crown was cemented to the Conometric Final Cap extraorally.



15. The final restoration was inserted using the Conometric Fixation Tool in order to activate the friction retention.



16. X-ray of the final restoration.

This case report is made by an independent dental professional using Dentsply Sirona products.

[www.dentsplysirona.com](http://www.dentsplysirona.com)

