



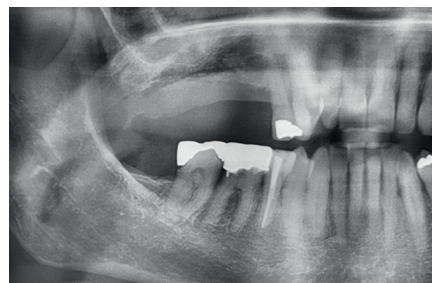
Dr Anthony Bendkowski
Oral Surgeon
Private Practice
Maidstone, Kent UK

Screw-retained restoration of upper right first molar and second premolar supported by the DS OmniTaper Implant System

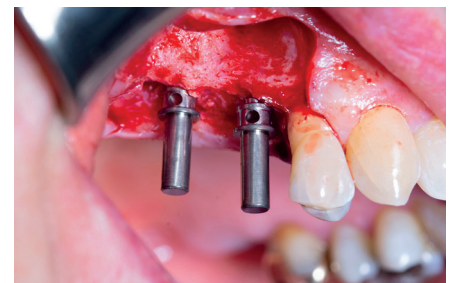
This 64-year-old female patient has a heavily restored dentition. She has recently lost the upper right first molar and second premolar, leaving an unbounded edentulous area. An implant solution was provided using two individual screw-retained crowns supported by two OmniTaper EV implants and using a digital workflow with PrimeScan and Atlantis.



1. The failing upper right second premolar and first molar were extracted by the patient's general dental practitioner prior to the planned implant treatment.



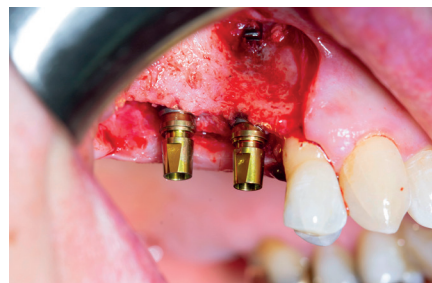
2. Radiographic assessment indicated that there was ample bone depth in the posterior maxilla to allow for satisfactory implant placement.



3. Full thickness envelope flap and Direction Indicators after initial preparation with OmniTaper Drill Ø2.0.



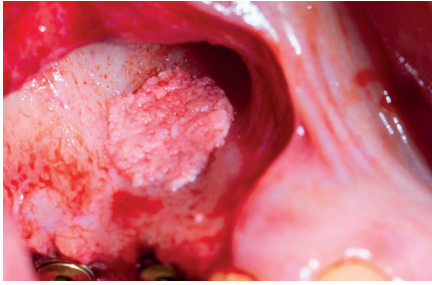
4. Installation of an OmniTaper EV Ø3.8 x 11 mm implant in tooth #4 (FDI 15) position using the TempBase Driver.



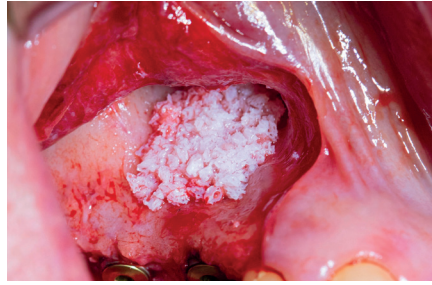
5. Both OmniTaper EV implants placed with the help of the pre-assembled TempBase abutments nicely aligned in tooth #4 (FDI 15) and #3 (FDI 16) positions. The implant-abutment connection size is medium (M), indicated by yellow color.



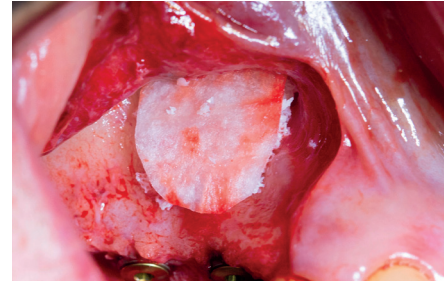
6. Use of Dentsply Sirona disposable BoneTrap to augment the small bone fenestration.



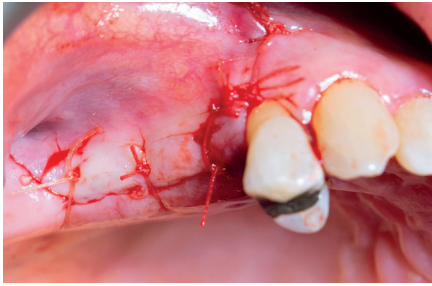
7. Large quantity of autogenous bone collected from the BoneTrap.



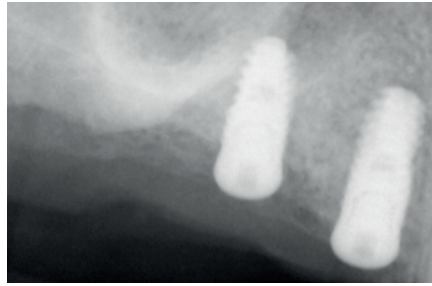
8. Symbios Xenograft Granules layered over the autogenous bone.



9. Symbios collagen membrane SR 15 x 20 trimmed to shape to complete the guided bone regeneration procedure.



10. Passive primary closure with PGA sutures.



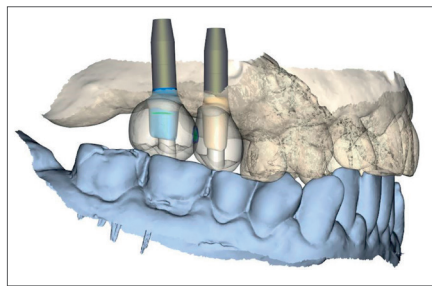
11. Radiograph of implants post-operatively.



12. Healing Abutment EV (M) placed at 3 months after initial surgery.



13. Atlantis IO FLO in situ ready for Primescan digital impression.



14. Design of Atlantis abutments and zirconia crowns.



15. Well fitting screw-retained Atlantis CustomBase abutments and zirconia crowns tried in - no adjustments needed.



16. Radiograph to verify correct seating of restorations.



17. Screw-access channels sealed and amalgam tooth position #5 (FDI 14) replaced with composite.



18. Final restorations completed.

This case report is published as an inspiration for you as a clinician / technician and not necessarily as a recommendation from Dentsply Sirona.

www.dentsplysirona.com

